



YOUR STORY STARTS HERE

**FUSEHILL STREET CAMPUS
OPEN DAY**

HELLO!

WELCOME TO YOUR OPEN DAY

We're so excited to have you with us today. This is your chance to explore our campus, meet our staff and students, and get a real feel for what life is like at the University of Cumbria. Whether you're here to learn more about your course, take a tour, or simply soak up the atmosphere, we hope you have a fantastic day.

Grab a bite to eat

Feeling peckish? Visit The Cube (Skiddaw Building) for breakfast, lunch, snacks, and drinks.

Stay Connected

Free guest Wi-Fi is available across campus for all visitors.

Wi-Fi Name: UoC-Conference

Password: Loweswater

Need Help?

Look out for our friendly student ambassadors and staff in branded lanyards, they're here to answer your questions and point you in the right direction.

Don't Miss Out

Check the timetable to make the most of everything on offer, from campus tours to course talks and Q&A sessions.



START YOUR OPEN DAY

Registration | 09:30 - 10:15

Once you have arrived on site, our friendly teams will guide you to the event registration area. Checking in is key to making sure you get your welcome bag and event programme.

Welcome Talk | 10:00 & 10:30

Learning Gateway Building Lecture Theatre

Pop along to an introduction to Cumbria. Find out about the Fusehill Street campus and what makes our university so unique and special.

Explore Your Course

Session One: 10:30 - 11:30

Session Two: 11:30 - 12:30

There are multiple ways to find out about our courses, from spending time in the facilities you will be learning in, to attending course talks, taking part in hands-on interactive sessions and getting one to one advice.

EDUCATION

Primary & Early Years Education (3-11) with QTS

| | | |
|---------------|--|----------------|
| 10:30 - 11:30 | Learn about the ambitious, high quality curriculum you will study and find out how this will be structured. Placements are at the core of your training and you will be shown how these link to your work in university. | Calva Building |
| 12:30 - 15:00 | Stop by our one-to-one drop-in sessions for a chance to chat with the course team | |

HEALTH

Diagnostic Radiography

| | | |
|---------------|---|-------------------|
| 10:30 - 11:30 | Find out about Diagnostic Radiography as a profession, where a Cumbria qualification can take you, and what makes Cumbria special for Diagnostic Radiography education. You will be given a tour of our brand new, state-of-the-art X-ray rooms and see some of the fantastic equipment we have available for our students to use, including image intensifiers, mobile X-ray machines and a simulated operating theatre. | Lonscale Building |
| 12:30 - 15:00 | Stop by our one-to-one drop-in sessions for a chance to chat with the course team | |

Midwifery

| | | |
|---------------|--|--|
| 10:30 - 11:30 | We will offer insight into the course and placements, providing an overview of what life as a student midwife is like. The open day will also give you the opportunity to learn some of the skills you will require as a midwife. You will have an opportunity to look around our clinical facilities and talk to tutors and current students. | Blencathra Building Midwifery Suite |
| 12:30 - 15:00 | Stop by our one-to-one drop-in sessions for a chance to chat with the course team | |

HEALTH

Nursing (all pathways)

| | | |
|---------------|--|--------------------------------|
| 11:30 - 12:30 | Explore the different Fields of Nursing Practice and the role of the nurse. An introductory talk will give you an insight into the programme, what life is like as a student nurse, career opportunities, and routes onto possible further study. You will also view our first-class simulation facilities, which allow you to experience challenging cases and build your confidence in a safe environment. | Blencathra Building SIM Lab |
| 12:30 - 15:00 | Stop by our one-to-one drop-in sessions for a chance to chat with the course team | |

Occupational Therapy

| | | |
|---------------|--|---------------------------------|
| 10:30 - 11:30 | Have a go at using adaptive equipment, problem solve how to help overcome challenges caused by a disability, take part in a creative activity, or learn a new skill. Our friendly lecturers will also tell you all about the course and answer any questions you have. | Blencathra Building OT Suite |
| 12:30 - 15:00 | Stop by our one-to-one drop-in sessions for a chance to chat with the course team | |

Physiotherapy

| | | |
|---------------|--|---------------------------|
| 11:30 - 12:30 | Join us for an immersive experience where you'll discover the dynamic world of physiotherapy first-hand. From hands-on therapeutic techniques to cutting-edge research opportunities, our comprehensive pre-registration programmes cover all facets of the profession. As well as meeting a member of the lecturing team, you'll learn some physiotherapy skills like using a stethoscope and measuring joint movement. You'll hear about our placement opportunities in a breadth of clinical settings, from sports rehabilitation to acute care. | Calva Building CG07-09 |
| 12:30 - 15:00 | Stop by our one-to-one drop-in sessions for a chance to chat with the course team | |

LAW & CRIMINOLOGY

Criminology and Forensic Investigation

| | | |
|---------------|--|---------------------------------|
| 10:30 - 11:30 | An overview and insight into our Criminology programme and what professions these degrees can open up. | Learning Gateway Building LG201 |
| 12:30 - 15:00 | Stop by our one-to-one drop-in sessions for a chance to chat with the course team | Learning Gateway Building |

Law

| | | |
|---------------|---|---------------------------------|
| 11:30 - 12:30 | Join us for an introduction to Law and take part in an interactive session which aims to tackle some of the most interesting legal issues of the day. | Learning Gateway Building LG202 |
| 12:30 - 15:00 | Stop by our one-to-one drop-in sessions for a chance to chat with the course team | Learning Gateway Building |

POLICING & SECURITY INTELLIGENCE

Professional Policing

| | | |
|---------------|---|---------------------------------|
| 10:30 - 11:30 | An introduction to and overview of our Professional Policing Degree (PPD), including a look at some of the course content and its application in the operational world. | Learning Gateway Building LG203 |
| 12:30 - 15:00 | Stop by our one-to-one drop-in sessions for a chance to chat with the course team | Learning Gateway Building |

Security Intelligence & Investigative Practice

| | | |
|---------------|---|---------------------------------|
| 11:30 - 12:30 | Join us for a seminar on how artificial intelligence developments are influencing practice. We will examine how security measures, intelligence gathering and investigative techniques have evolved to meet contemporary demands. | Learning Gateway Building LG003 |
| 12:30 - 15:00 | Stop by our one-to-one drop-in sessions for a chance to chat with the course team | Learning Gateway Building |

PSYCHOLOGY

Psychology (all pathways)

| | | |
|---------------|--|---------------------------|
| 11:30 - 12:30 | Gain an insight into our Psychology and Psychology with Counselling and Psychotherapy degrees. You will find out more about the course content and future career possibilities, support during your studies, and university life at Cumbria. | Skiddaw Building SKG12 |
| 12:30 - 15:00 | Stop by our one-to-one drop-in sessions for a chance to chat with the course team | Learning Gateway Building |

SCIENCE & ENVIRONMENT

Biomedical Science

| | | |
|---------------|---|-----------------------------------|
| 11:30 - 12:30 | Join us for an interactive session with our expert staff that will explore the role of the Biomedical Scientist and how studying at the University of Cumbria will support you on that journey. | Blencathra Building STEM Lab 1 |
| 12:30 - 15:00 | Stop by our one-to-one drop-in sessions for a chance to chat with the course team | Learning Gateway Building |

Environmental Science

| | | |
|---------------|--|------------------------------------|
| 11:30 - 12:30 | Join us to find out more about how our Environmental Science degree will equip you with the knowledge and skills needed to develop as an environmental practitioner. Discover our modern and well-equipped facilities and meet some academic staff to get a feel for what studying with us will be like. | Learning Gateway Building LG105 |
| 12:30 - 15:00 | Stop by our one-to-one drop-in sessions for a chance to chat with the course team | Learning Gateway Building |

Zoology

| | | |
|---------------|--|-----------------------------------|
| 10:30 - 11:30 | This is your opportunity to meet our academic staff and discover our modern and well-equipped facilities. You'll get a real feel for what it's like to work in our interactive labs. | Blencathra Building STEM Lab 2 |
| 12:30 - 15:00 | Stop by our one-to-one drop-in sessions for a chance to chat with the course team | Learning Gateway Building |

Integrated Foundation Year

| | | |
|---------------|---|------------------------------------|
| 11:30 - 12:30 | Gain an introduction to studying at our Fusehill Street campus on the Integrated Foundation Year for Conservation (all pathways), Geography, and Outdoors (all pathways). For specific undergraduate course content, years 1-4, please book a place for our Ambleside Open Day. | Learning Gateway Building LG104 |
| 12:30 - 15:00 | Stop by our one-to-one drop-in sessions for a chance to chat with the course team | Learning Gateway Building |

SOCIAL WORK, HEALTH & SOCIAL CARE

Health and Social Care

| | | |
|---------------|---|------------------------------------|
| 10:30 - 11:30 | Explore real-world social inequalities and health determinants of contemporary practice to prepare you for working across a multi-disciplinary and diverse sector. The open day will give you a unique opportunity to meet our expert supportive staff team. They'll share insight into the programme expectations, what life is like as a student, future career opportunities, and routes into further study. | Learning Gateway Building LG102 |
| 12:30 - 15:00 | Stop by our one-to-one drop-in sessions for a chance to chat with the course team | Learning Gateway Building |

Social Work

| | | |
|---------------|--|------------------------------------|
| 11:30 - 12:30 | Social Work is a great profession based on positive support and promoting social justice. This session will explore how we work with you, as a valued student, through to professional qualification on campus as well as on placement. A range of interactive activities will be undertaken to allow for learners to experience how social work is taught upon our programme. | Learning Gateway Building LG102 |
| 12:30 - 15:00 | Stop by our one-to-one drop-in sessions for a chance to chat with the course team | Learning Gateway Building |

TAKE A TOUR

CAMPUS TOURS

9:45, 10:30,
11:15, 12:00,
12:45, 13:30,
14:15

Get a feel for where you will be studying and find out what makes our Fusehill Street campus so unique. Our expert staff and Student Ambassadors will take you on a tour of the campus, showing you our teaching and study spaces, specialist course facilities and much more.

Join your tour point
outside the Learning
Gateway Building

ON-SITE ACCOMMODATION TOURS

10:30, 11:30,
12:00, 12:30,
13:00, 13:30,
14:00, 14:30

Get a feel for where you could be living by exploring our on-site halls of residence, Carrock Halls. You will get the opportunity to check out the kind of room you could be staying in and explore the shared facilities.

Join your tour point
outside Carrock Halls
of Residence

OFF-SITE ACCOMMODATION TOURS

12:00, 13:00,
14:00

Are you looking at living away from campus, close to Carlisle city centre? Then visit our off-site student accommodation in Denton Holme Student Village. Tours are provided via coach transport.

Join your tour point
outside the Learning
Gateway Building



COME AND CHAT

Drop in between 12:00-15:00

Learning Gateway Building

Come and see what's on offer to students and put your questions to our expert support teams.

- **Admissions:** We can help with your university application, clarify entry requirements and equivalency qualifications, and discuss access and mature entry routes into university.
- **Money Advice:** Receive advice on applying for student finance, NHS bursaries and student loans.
- **Disability & SpLD:** Find out how we can support you with a range of additional needs, such as medical conditions, visual/hearing/mobility impairments, autism and mental health.
- **Integrated Foundation Year:** An Integrated Foundation Year (IFY) is designed to develop your academic skills and provide an introduction to your chosen subject and university services, systems, and processes before you embark on the rest of your degree.
- **Student Experience:** Chat to our current students about their experiences and all the things they love about living in Carlisle. Discover the clubs and societies on offer and what life is like on campus.
- **UoC Active:** Find out about student memberships, available classes and off-site fitness facilities.



| | 09:30 - 10:00 | 10:00 - 10:30 | 10:30 - 11:00 | 11:00 - 11:30 | 11:30 - 12:00 | 12:00 - 12:30 | 12:30 - 13:00 | 13:00 - 13:30 | 13:30 - 14:00 | 14:00 - 14:30 | 14:30 - 15:00 |
|--|---------------------|---------------------|---------------------|---------------------|---------------------|---------------------|---------------------|---------------------|---------------------|---------------------|---------------------|
| Welcome to Cumbria (Learning Gateway Lecture Theatre) | | | | | | | | | | | |
| Explore Your Course Session (See course pages for locations) | | | | | | | | | | | |
| Course one-to-one drop in (See course pages for locations) | | | | | | | | | | | |
| Come and Chat to our expert support teams (Learning Gateway Building) | | | | | | | | | | | |
| Preparing for Health Course Applications and Interviews (Learning Gateway Building - LG101) | | | | | | | | | | | |
| Application Advice & Student Finance Explained (Learning Gateway Building - LG101) | | | | | | | | | | | |
| Campus Tours (Leaving from outside the Learning Gateway Building) | | | | | | | | | | | |
| On-site Accommodation Tours (Leaving from outside the Learning Gateway Building) | | | | | | | | | | | |
| Off-site Accommodation Tours (leaving from outside the Learning Gateway Building) | | | | | | | | | | | |

IMMERSIVE ROOM

We will end our Campus Tours in this room to allow you time to explore.

Fully immerse yourself in a variety of health environments and scenarios. Our brand new interactive Immersive Rooms combine innovative technology, augmented reality, interactive 3D graphics and audio content to form a creative multi-sensory learning space.

Running on the very latest cutting-edge technology, the Immersive Rooms allow for visual, auditory and sensory immersion, as well as letting students interact with the environments and objects projected onto the walls by simply walking up and touching them.

The space allows student cohorts across the Institute of Health to engage in fully immersive simulations that can take them anywhere – from the home of a 70-year-old dementia patient to the site of a motorway accident – within seconds.

All our scenarios are created in-house and are tailored exactly to the relevant health profession and learning outcomes of each session.

SPORT AND ACTIVITIES

At the University of Cumbria, your wellbeing matters. We encourage a healthy balance of work and play, and staying active is a great way to boost mood, sleep, energy and self-esteem.

UoC Active offers a range of fitness facilities and classes at our Ambleside, Carlisle, and Lancaster campuses, including air-conditioned gyms and sessions like Pilates, yoga, bootcamps, and more. Affordable memberships and premium packages include access to partner gyms like Better Leisure and Salt Ayre, plus nationwide access through the BUCS UNiversal Scheme.

GROUPS & SOCIETIES

Through our Students' Union, we have a range of groups available to our students, including Women's Hockey, Mountaineering, Paddling, Christian Union, South Asian Society, Men's Hockey, and more. At each of our campus locations, we can also help you find groups and societies which are available to the wider community outside of the university. SU Sports teams also have the opportunity to take part in BUCS leagues.



Women's Hockey



Bushcraft Society



Paramedic Society

GET INVOLVED AT UNIVERSITY

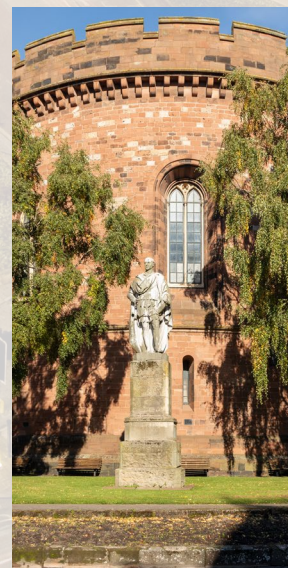


STUDENT LIFE IN CARLISLE

Brimming with culture and a dynamic student scene, Carlisle is a vibrant Cumbrian city, with great restaurants, relaxing parks, and lots of hidden spots perfect for photos. Striking the right balance of entertainment, culture, and countryside, Carlisle has everything you need to make your time at university memorable.

In between lectures, our thriving city is the perfect place to discover new passions. From bouldering, swimming and hiking to axe throwing, bowling and escape rooms, there are so many ways to spend your downtime close to campus.

Carlisle's cultural calendar is studded with fun events throughout the year, too. Grab your friends and sample ales and ciders at the Carlisle Beer Festival or enjoy live music and comedy at the Old Fire Station. The city's nightlife is plentiful, with everything from cocktail bars to pubs and clubs.



#LOVEYOURSTORY

YOUR HOME AT CUMBRIA

Imagine waking up to the smell of coffee brewing and the sound of flatmates chatting. Leave the comfort of your warm, cosy bed and open your curtains to views of green spaces, historic stone buildings, and the quiet charm of one of England's most historic cities.

For first year students, accommodation is at the heart of the university experience, where lasting friendships are made, memorable experiences are created, and important life skills are formed.



**AFFORDABLE
LIVING**

**EN-SUITE AND
SHARED
FACILITIES**



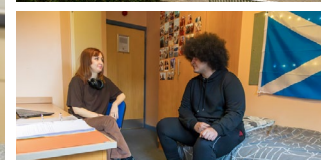
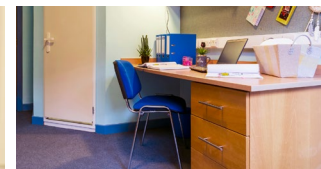
**GREAT LOCATIONS
CLOSE TO CAMPUS**

**YOUR
RIGHT TO
A QUALITY
HOME**



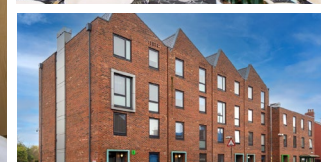
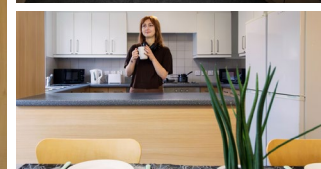
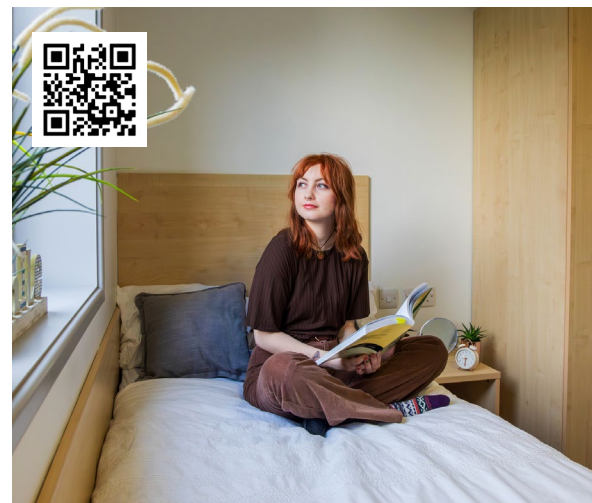
**SAFE AND GOOD
QUALITY ACCOMMODATION**

CUMBRIA.AC.UK



CARROCK HALLS

LOCATION: Fusehill Street, Carlisle **AVAILABILITY:** 85 bedrooms **ROOM TYPE:** En-suite
STUDENTS PER FLAT: 5-7 students **PRICE:** £139.00 PW



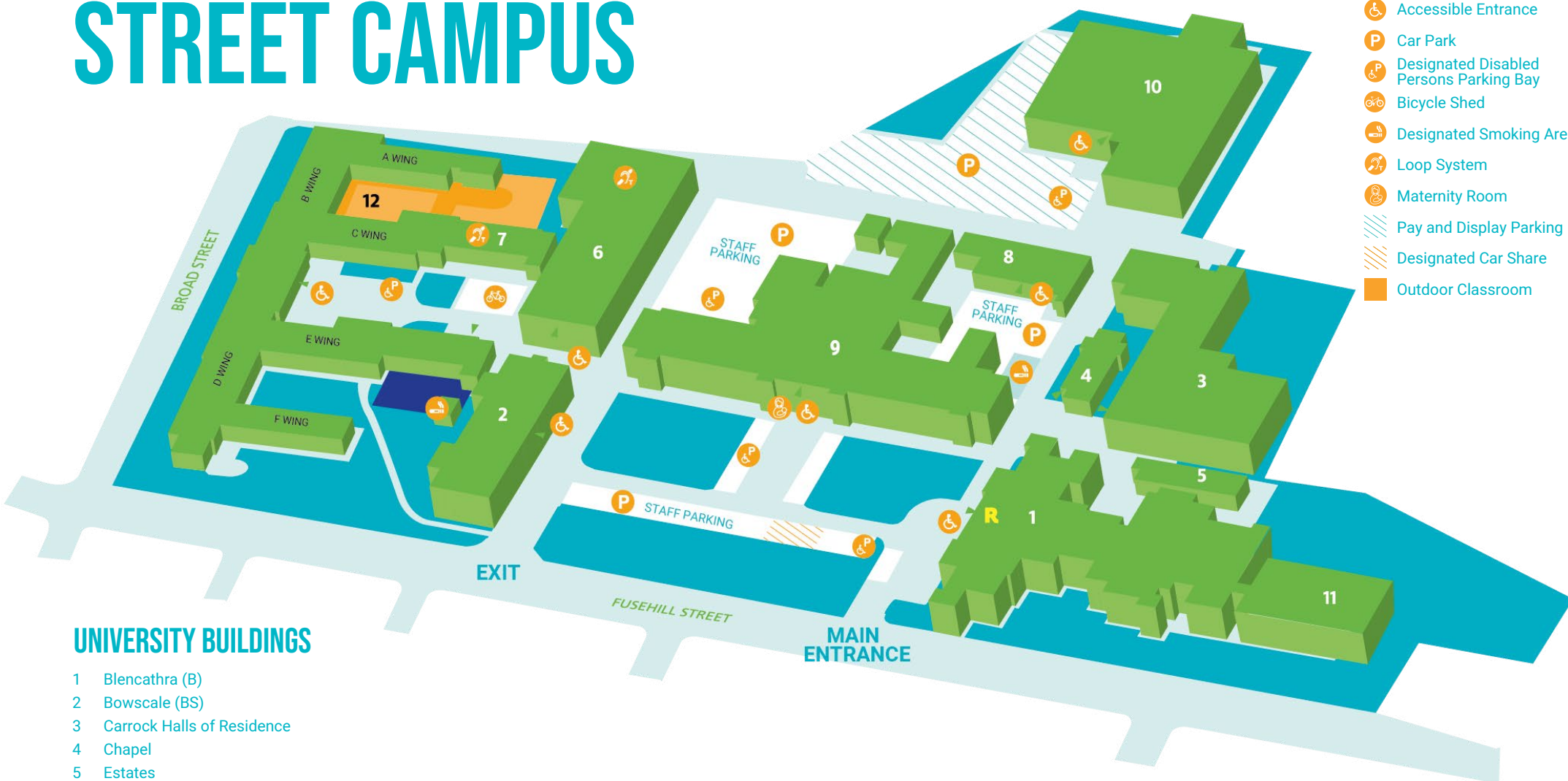
DENTON HOLME

LOCATION: Norfolk Street, Carlisle **AVAILABILITY:** 249 rooms within 25 townhouses
ROOM TYPE: Fully furnished en-suite and standard rooms with 3/4 beds **PRICE:** £136.02 PW

CARLISLE FUSEHILL STREET CAMPUS

CAMPUS KEY MAP

- R Main Reception
- ▶ Building Access
- ♿ Accessible Entrance
- P Car Park
- ♿ P Designated Disabled Persons Parking Bay
- 🚲 Bicycle Shed
- 🚬 Designated Smoking Area
- 📶 Loop System
- 👶 Maternity Room
- ▨ Pay and Display Parking
- ▨ Designated Car Share
- Outdoor Classroom



UNIVERSITY BUILDINGS

- 1 Blencathra (B)
- 2 Bowscale (BS)
- 3 Carrock Halls of Residence
- 4 Chapel
- 5 Estates
- 6 Learning Gateway (LG)
- 7 Calva Lecture Theatre
- 8 Lonscale Building (LN)
- 9 Skiddaw (SK)
- 10 Sports Centre (CSP)
- 11 STEM Laboratories
- 12 Outdoor Classroom

Address

University of Cumbria,
Fusehill Street, Carlisle, CA1 2HH

Telephone

01228 616234



Let us know how we did and what you thought of your day. Scan the QR code to complete a quick survey. As a thank you for sharing your feedback, you will have the opportunity to enter our prize draw for a chance to win an Amazon gift card!

STAY UP TO DATE WITH ALL THINGS CUMBRIA

CONTACT US/FOLLOW US



TikTok: @cumbriauni



Instagram: @cumbriauni



Facebook: universityofcumbria



LinkedIn: universityofcumbria



01228 588588



enquirycentre@cumbria.ac.uk